



Assembly Guide



EN

© 2025 Ef-Note Inc.

EFNOTE PRO500X ASG EN Rev.01-2025

CAUTION

Read this guide in combination with the Quickstart Guide.

* Before using this product, read "IMPORTANT SAFETY INSTRUCTIONS" in the Quickstart Guide.

For the EFNOTE PRO Reference Guide, or other latest information, please refer to the web below.

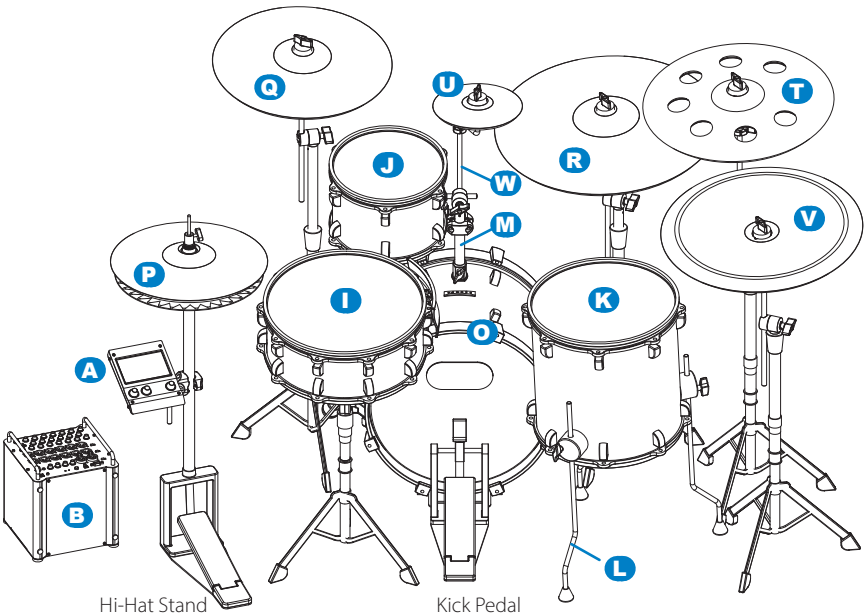
EFNOTE PRO Web
ef-note.com/products/drums/EFNOTEPRO



Packing List

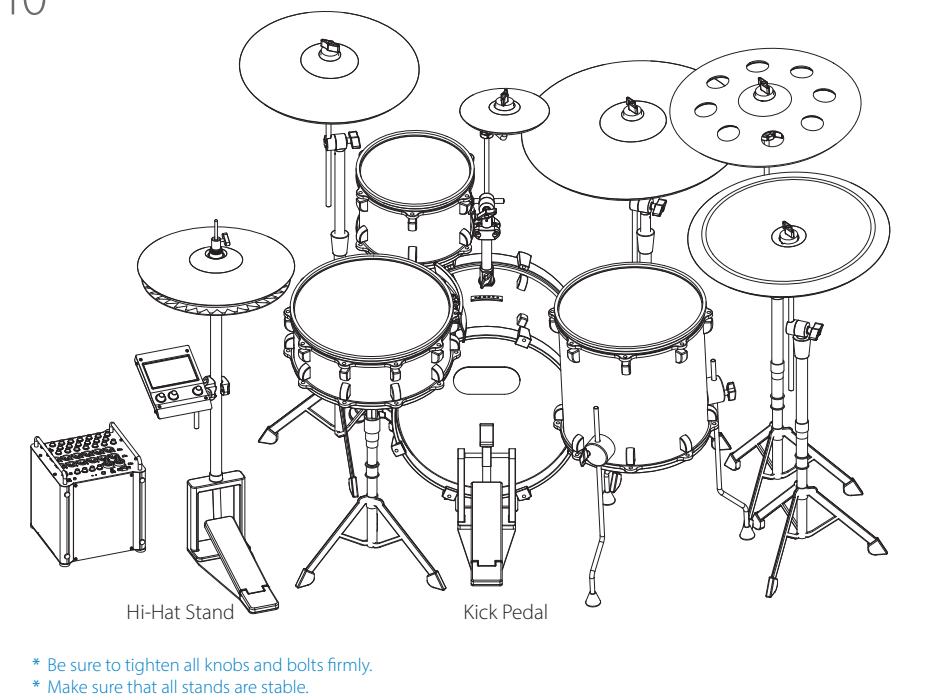
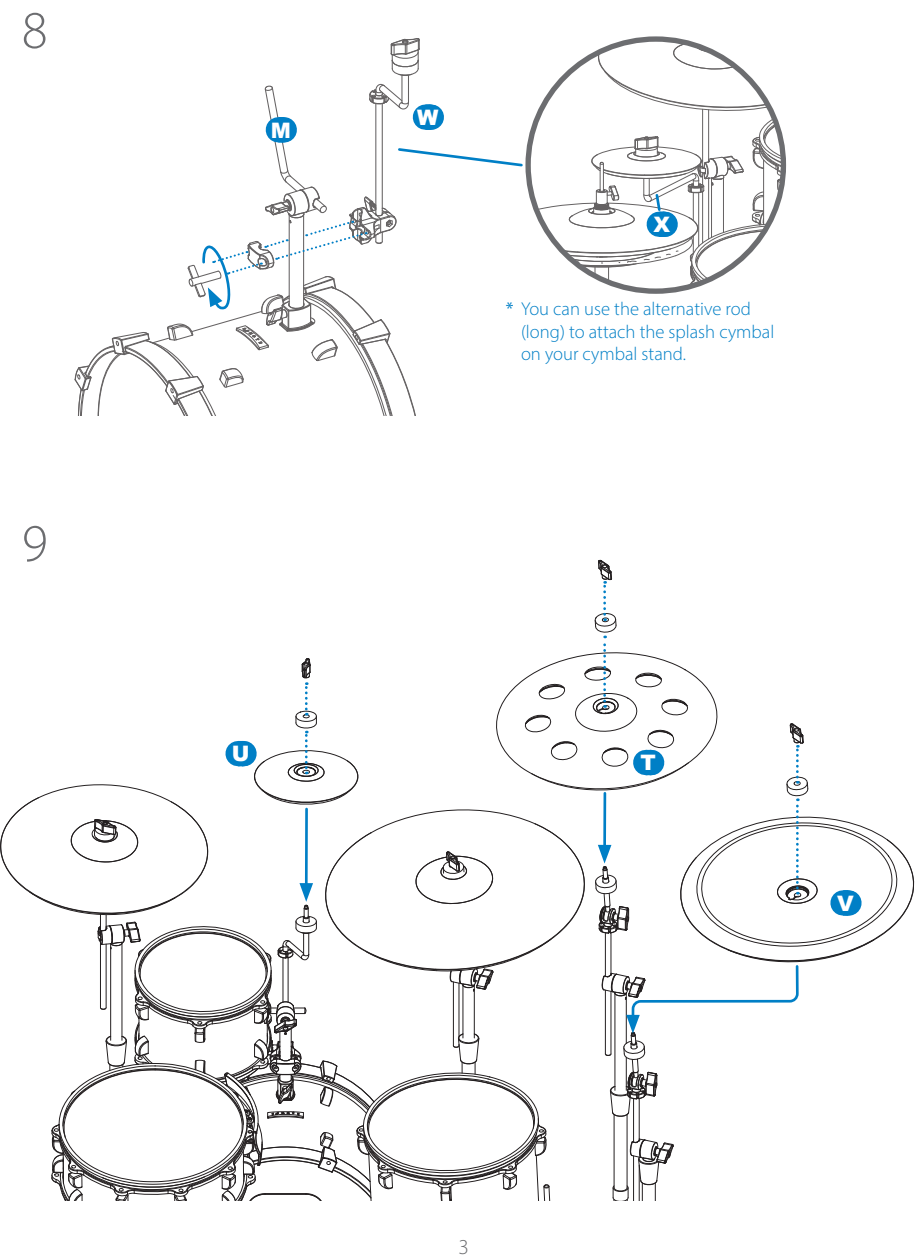
EFNOTE PRO		
500X series BOX1		
A	Sound Module (Control Surface)	1x
B	Sound Module (Base Unit)	1x
C	Link Cable 2.0m (EFD-DSUB9-2)	1x
D	AC Adapter (FJ-SW1202000N-EFNOTE)	1x
E	Module Mount Set	1x
F	Trigger Cable 3.0m (EFD-TRS-LL3)	10x
G	Hi-Hat Cable L 3.0m (EFD-DIN6-LL3)	1x
H	Smartphone Tray Set	1x
	Tuning Key	1x
	Cable Tie	10x
	Cable Label	2x
	Quickstart Guide	1x
	Assembly Guide	1x
I	14" Snare (EFD-S1455)	1x
J	10" Tom (EFD-T1070)	1x
K	13" Floor Tom (EFD-T1313)	1x
L	Floor Tom Leg	3x
M	Tom Mount Set	1x
N	Hex Key	1x
W	Splash Cymbal Mount Set	1x
X	Splash Cymbal Rod Long (Alternative)	1x
Y	Trigger Cable 4.0m (EFD-TRS-LL4)	5x

EFNOTE PRO		
500X series BOX2		
O	16" Kick (EFD-K1612)	1x
P	14" Hi-Hat Cymbals (EFD-H14)	1x
Q	16" Standard Cymbal (EFD-C16)	1x
R	20" Ride Cymbal (EFD-C20)	1x
S	Beater Patch	1x
T	17" FX Cymbal (EFD-C17FX)	1x
U	8" Splash Cymbal (EFD-C08)	1x
V	18" China Cymbal (EFD-C18CH)	1x



NOTE
The hardware shown in this manual such as a kick pedal, hi-hat stand, snare stand, and cymbal stands are optional, and may be included depending on the package purchased. For details, please contact the store where you purchased the product.

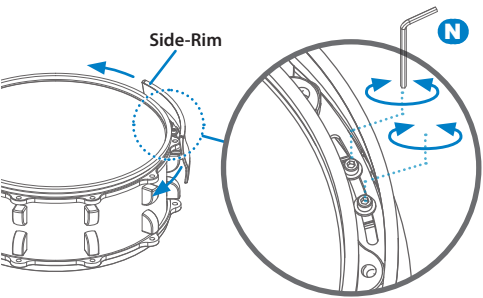
First, proceed steps 1 through 7 of the kit assembling procedure on the Quickstart Guide.



Adjusting the Side-Rim Position

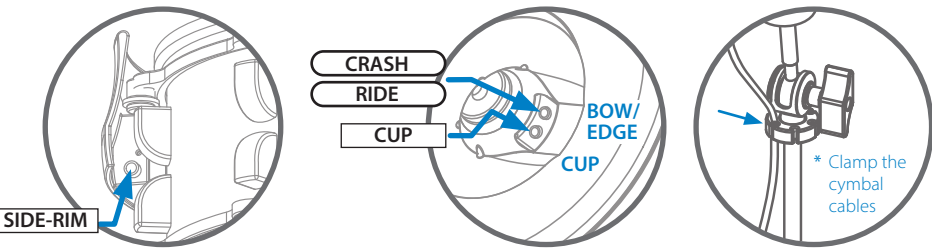
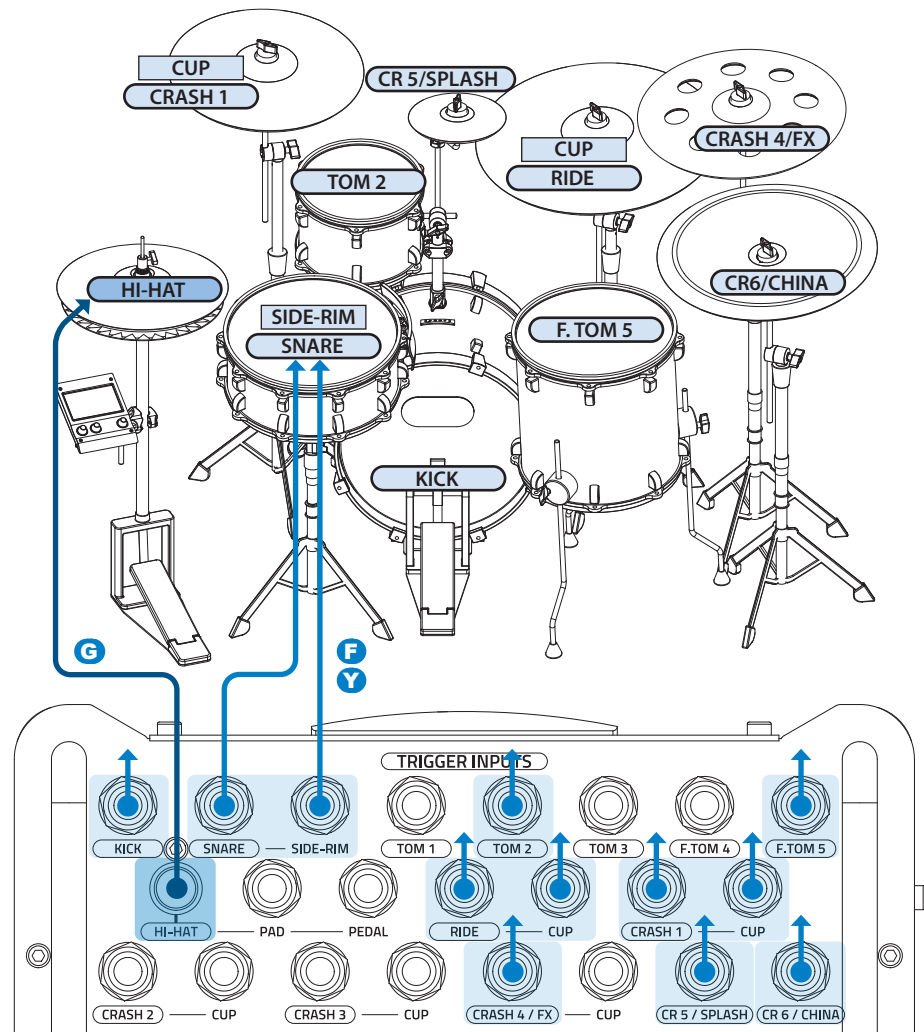
EFNOTE PRO 500X

The side-rim can be moved side to side, to adjust its position. Loosen the bolts shown in the figure with included hex key, and adjust the position, then tighten up the bolts again.



Drum/Cymbal Pad Connections

Connection Example



NOTE

* To avoid disconnecting the trigger cables unexpectedly, tie or clamp the cables.

After connecting pads

- 1 Be sure all pad models being connected are correctly configured. ([MENU] --> [TRIGGER] --> [Overview])
* A trigger settings file can be downloaded from the web.
- 2 Calibrate your hi-hat. ([POWER] --> [HH Calib.])
- 3 Adjust the Global Pan settings according to the position of the pads you located. ([MENU] --> [GLOBAL PAN])

Support

If you have any questions about the product, please visit the product support page on the web. Alternatively, please contact your local authorized distributor listed on the web below.

Product Support

<http://ef-note.com/support>

EFNOTE Authorized Distributor List

<http://ef-note.com/distributors>



Product Support



Distributors

* All illustrations and screens appearing in this document are for the purpose of explaining, and may differ from the actual product or specifications.
* Company names or product names etc. appearing in this document are the registered trademarks or trademarks of their respective corporate owners.
* EFNOTE is a trademark or registered trademark of Ef-Note Inc.